

Annual Report

Pierce County Fire District 8



*“Exceptional service
provided by quality
people, dedicated to the
diverse needs of our
communities.”*

2009

Mission Statement

Exceptional service provided by quality people, dedicated to the diverse needs of our communities.

Vision Statement

Pierce County Fire District No. 8 will provide excellent service by:

- *Proactively preparing to meet current and future needs of the community.*
- *Enhancing mutually supportive relationships with our community through education and participation.*
- *Consistently providing an organization that attracts and retains quality personnel by recognizing that our members are the Districts most valuable resources.*
- *Promoting a decision making process that values input and collaboration from stake holders.*
- *Support of regionalized fire and medical services for improved public safety.*

Values

- *Professional caring relationship with citizens.*
- *Community Support / Involvement with citizens and businesses.*
- *Trust, Honesty, Integrity and Ethical Behavior*
- *Accountable to each other.*
- *Teamwork*
- *Open communications / Open to change*
- *Doing the right thing.*
- *Dedication of personal time.*
- *Respect for others / Adaptive to diversity.*
- *Value innovation and technology.*
- *Commitment to each other.*

Table of Contents

Accomplishments

Public Relations Events	4
Miscellaneous	4

Emergency Responses

Emergency Responses	5
Response Objectives.....	6-11
Incident Summary	12
Response Graph	12
Six Year comparison of Incidents Graph.....	13
Fires by Type Chart.....	13
Total Fire Loss by Month Graph	14
EMS/Fire Priority Arrival Times.....	15
Runcard Layout (Zone Map)	16
EMS Priority Arrival Times Chart	16
Fire Priority Arrival Times Chart	17
Mutual Aid	18
Mutual Aid Graph.....	19
Milton Mutual Aid Graph	19
Incidents by Time of Day.....	20
Incidents by Day of Week.....	21
Incidents Per Zone	21
Incident Distribution by Occupancy	22
Patient Transports.....	23

Fire Prevention

Fire Prevention	24
-----------------------	----

Community Education

CPR Training	25
Fire Safety Education.....	25
Station Tours.....	25
Open House and City Picnic	26
Easter Egg Hunt and Santa Run.....	26

Training Sessions

Training Sessions.....	27
------------------------	----

Personnel Turnover

Commissioners	28
Career	28
Chaplain	28
Firefighter in Training	28,29

Staff Injuries and Illness

Staff Injuries and Illness.....	29
---------------------------------	----

Apparatus

Apparatus.....	30
----------------	----

Facilities

Facilities	31
------------------	----

Financial Reports

Annual Financial Statement.....	32-44
---------------------------------	-------

Accomplishments

PUBLIC RELATIONS EVENTS

- ◆ Open House
- ◆ Santa Run
- ◆ Easter Egg Hunt
- ◆ City Picnic
- ◆ Toys for Tots Campaign
- ◆ School Fire Safety Education
- ◆ Edgewood Fun Run
- ◆ Multiple Station Tours



Open House extrication demonstration



Easter Egg Hunt

MISCELLANEOUS

- ◆ Three (3) probationary firefighters completed their probation.
- ◆ Enhanced Regional Service Opportunities Through Cooperative Response and Training
- ◆ Continued negotiations with East Pierce Fire and Rescue to prepare for a merger of the two organizations.

*Firefighter Lindenmuth,
Firefighter Poisson and Fire-
fighter Thor take their oath*



Emergency Responses



Firefighters extinguish a car fire.

Pierce County Fire District 8 (The Edgewood Fire Department) participates in the National Fire Incident Reporting System (NFIRS) to report each emergency incident. Our incident response statistics are compiled with other reporting Fire Departments within the nation. These statistics can be utilized to focus on current problems and to help predict future ones within the fire service.

The department's average response time was five minutes and seven seconds (5:07) from the time of dispatch to arrival based on incidents dispatched as priority emergencies within the boundaries of Pierce County Fire District 8.

The estimated fire loss for Pierce County Fire District 8 was \$469,080. The Fire

Prevention Division for Pierce County investigated two (2) significant structure fires. All of the fires investigated by the Fire Marshal's Office were ruled accidental.

In 2009, the Edgewood Fire Department responded to 1,212 calls for service including 809 EMS/Rescue calls, 46 Fire calls, 51 motor vehicle accidents and a variety of other call types and requests for service.

The following pages illustrate the history of incidents; response analysis; various types of fires; the number of responses by time of day, day of week, and district; and false alarm analysis.

Pierce County Fire District 8 House Bill 1756 Annual Report for 2009

Purpose

The Washington State Legislature adopted House Bill 1756 in 2005, which requires substantially career fire departments to maintain a written statement or policy that establishes the following:

- The existence of the fire department
- The services provided by the fire department
- The basic organizational structure of the fire department
- The service delivery/response time objectives for the fire department

Furthermore, House Bill 1756 requires substantially career fire departments to issue an annual report. The report is intended to provide elected officials and the community with a true picture of how well the fire department is doing meeting the adopted response objectives.

Pierce County Fire District No.8 has adopted Resolution 429 with the intent and purpose of complying with the new law. The Resolution includes each of the required elements, including the establishment of service delivery/response time objectives. The objectives were developed using recognized standards from the National Fire Protection Association. However, the District recognizes that it will take several years to achieve the adopted delivery/response time objectives. For this reason, per Resolution 429, success will be measured by the successful reduction of response times, and progress towards achieving these objectives.

The historical data presented in this report is from the National Fire Incident Reporting System (NFIRS) database, which has been in use since 2000 and precedes the House

Bill 1756 reporting requirements. The House Bill recommends the use of percentile methods over averages and places different emphasis on key data elements. The District is refining the National Fire Incident Reporting System (NFIRS) database collection to accommodate these changes. Every effort has been made to accurately present the House Bill 1756 response data, but some inherent limitations exist.

Policy Statements

Pierce County Fire District No. 8 has existed as a fire district within the State of Washington since 1947. The District was organized under the tenants of RCW Title 52, with the legal formation mandated by a County Commissioner Resolution.

Pierce County Fire District No. 8 provides service to ten square miles in primarily suburban areas within Pierce County, Washington.

The services provided by Pierce County Fire District No. 8 include:

1. Fire Suppression
2. Emergency Medical Services (EMS),
3. Basic Life Support (BLS)
4. Hazardous materials "Operations Level" Response
5. Technical Rescue/Special Operations Response
6. Participation in Local Emergency Management Functions

Number of Members:

In 2008, Pierce County Fire District No. 8 employed fifteen (15) full time employees (FTE), and ten (10) volunteers. The total number of personnel organized by their assigned areas of responsibility is as follows:

Administration:

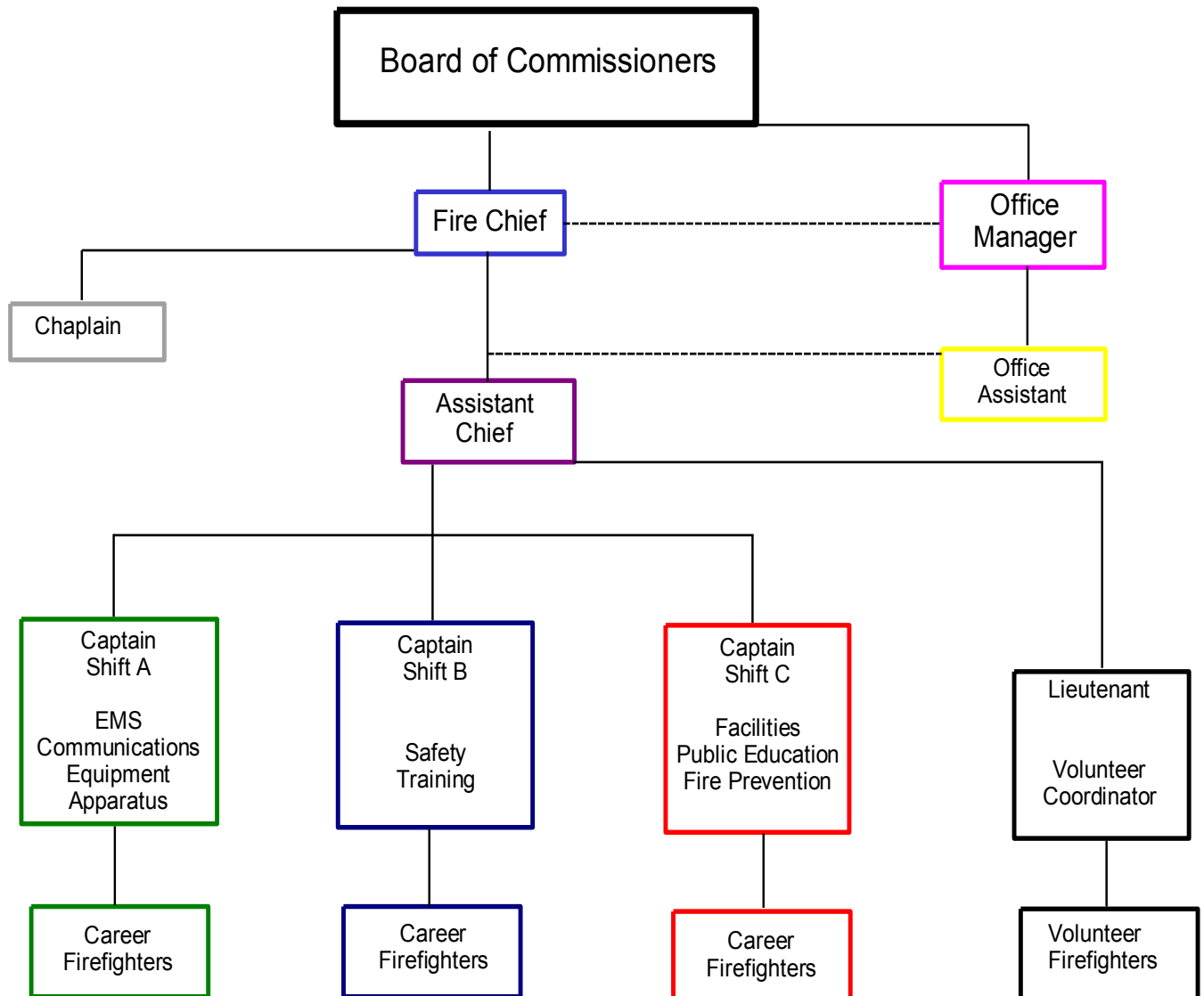
Fire Chief (1.0 FTE)
Assistant Fire Chief (1.0 FTE)
Support Staff (2.0 FTE)

Operations:

Captains (3.0 FTE)
Firefighter – EMTs (9.0 FTE)
Volunteers (8.0 Volunteer Members)

Organizational Structure:

Pierce County Fire District No. 8 operates under a chain-of-command that has been established by the Board of Fire Commissioners, which is elected to represent the public they serve.

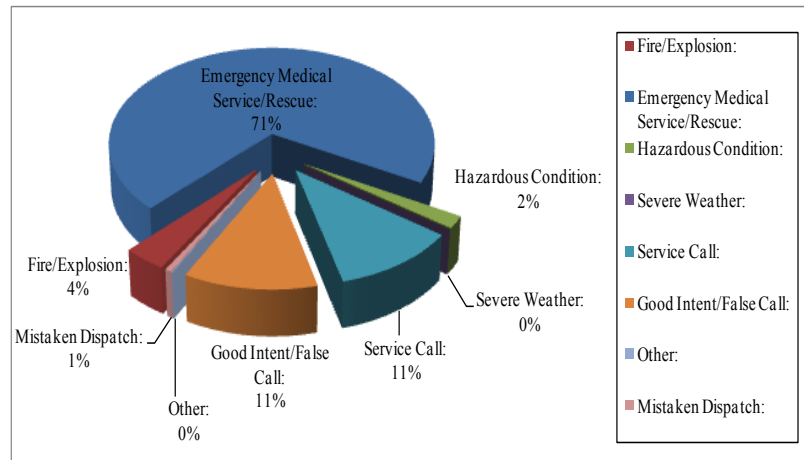


2009 Response Information

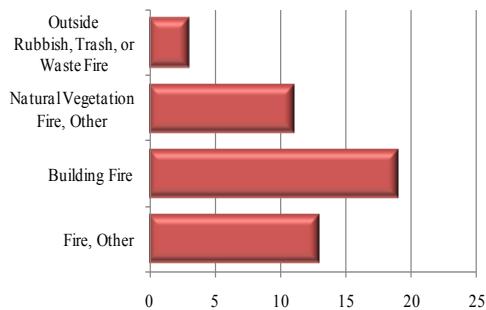
Total emergency responses in 2009 were broken down as followed:

Fire/Explosion:	46
Emergency Medical Service/Rescue:	860
Hazardous Condition:	24
Severe Weather:	0
Service Call:	134
Good Intent/False Call:	140
Other:	1
Mistaken Dispatch:	7

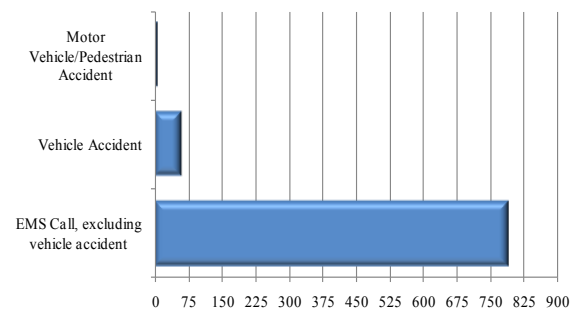
Total Responses: 1,212



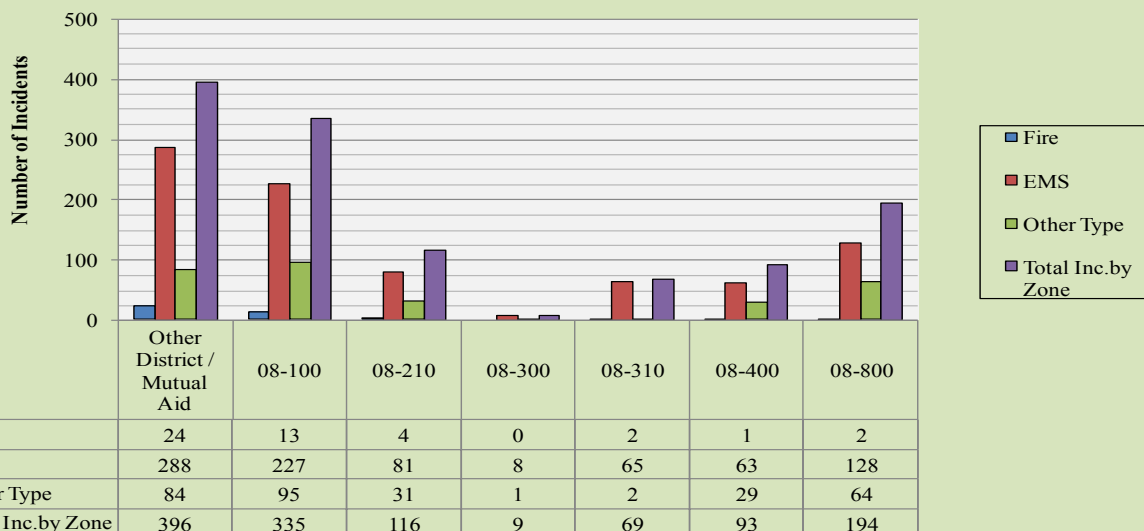
Fire/Explosion Responses



Emergency Medical/Rescue Responses



Incidents per Zone by Type



Service Delivery/Response Time Objectives

Turnout Time:

Pierce County Fire Protection District No. 8 has adopted a turnout time (from the time responders are dispatched by the communications center to the time they are en route to the emergency) objective for all priority responses of ninety (90) seconds 90% of the time.

In 2009, the average turnout time for Pierce County Fire Protection District No. 8 was fifty-four (54) seconds. The District met the ninety (90) second objective 85.85% of the time. The department's turnout time was one hundred two (102) seconds 90.08% of the time.



Brush fire near apartment building.

Fire Suppression within the City of Edgewood:

Pierce County Fire District No. 8 has adopted the following service delivery objectives within the City of Edgewood:

Zones 08-100, 08-210, 08-800

The District has adopted a response/travel time objective of eight (8) minutes for the arrival of the First Fire Engine Company 90% of the time for zones 08-100, 08-210

and 08-800. The District's definition of the First Fire Engine Company is four (4) suppression personnel arriving on one (1) or more apparatus.

In 2009, the average response/travel time of the First Fire Engine Company for Pierce County Fire Protection District No. 8 was three (3) minutes and forty-six (46) seconds. The District met the eight (8) minute objective 75.00% of the time. The department arrived in eight (8) minutes and twenty-eight (28) seconds 100% of the time.

Zones 08-300, 08-310, 08-400

The District has adopted a response/travel time objective of nine (9) minutes for the arrival of the First Fire Engine Company 90% of the time for zones 08-300, 08-310 and 08-400.

In 2009, the average response/travel time of the First Fire Engine Company for Pierce County Fire Protection District No. 8 was six (6) minutes and fifty-two (52) seconds. The District met the nine (9) minute objective 100% of the time. The department arrived in six (6) minutes and fifty-two (52) seconds 100% of the time.



Firefighters extinguish an illegal burn pile.

Response Time for Full First Alarm Assignment

The District has adopted a response/travel time objective of fifteen (15) minutes for the arrival of the Full First Alarm 90% of the time. The District's definition of a Full First Alarm is three (3) Fire Engine Companies, one (1) Ladder Company and one (1) Ambulance.

In 2009, the average response/travel time of the Full First Alarm for Pierce County Fire Protection District No. 8 was fourteen (14) minutes and thirty-one (31) seconds. The District met the fifteen (15) minute objective one hundred (100) percent of the time, making it within the allotted time to one (1) out of one (1) Full First Alarm Incidents within Pierce County Fire District 8.

Emergency Medical Services (EMS) within the City of Edgewood:

Pierce County Fire Protection District No. 8 has adopted the following service delivery objectives within the City of Edgewood:

Zones 08-100, 08-210, 08-800

The District has adopted a response/travel time objective of six (6) minutes 90% of the time for zones 08-100, 08-210 and 08-800, for the arrival of Basic Life Support (BLS) capability.

In 2009, the average response/travel time of Basic Life Support (BLS) capability for Zones 08-100, 08-210, 08-800 in Pierce County Fire Protection District No. 8 was three (3) minutes and thirty (30) seconds. The District met the six (6) minute objective 93.93% of the time. The department arrived in five (5) minutes and twenty (20) seconds 90% of the time.

Zones 08-300, 08-310, 08-400

The District has adopted a response/

travel time objective of seven (7) minutes 90% of the time for zones 08-100, 08-210 and 08-800, for the arrival of Basic Life Support (BLS) capability.



Firefighter checking vitals.

In 2009, the average response/travel time of Basic Life Support (BLS) capability for Zones 08-300, 08-310 and 08-400 in Pierce County Fire Protection District No. 8 was six (6) minutes and fifty-three (53) seconds. The District met the seven (7) minute objective 58.82% of the time. The department arrived in eight (8) minutes thirty-six (36) seconds 90% of the time.

Predictable Results

The following are the departments explained Predictable Results:

- ◆ Pierce County Fire District 8 has at least three geographic areas that we cannot respond to in our normal expected amount of time to emergency incidents. They include the following response zones: 300, 310 and 400. Pierce County Fire District 8 only deploys service from one (1) fire station covering a ten (10) square mile area. The station is located in such a manner to best support the higher risks and population density of the community.

- ◆ Recently the district has seen a considerable amount of growth in residential properties. This growth has increased requests for service, as well as increased traffic congestion.
- ◆ For our full alarm responses the department is only capable of sending one on-duty engine company. All other resources to complete a full alarm assignment are by mutual aid; therefore the response time for these units can be lengthy as they travel from their jurisdiction to the district. This Predictable Result will directly affect our response times for the Full Alarm Report.
- ◆ Our incident reporting system for 2009 is an older version and limits the amount and meaningful data that can be generated for this report. This includes realistic reactionary times, adequate resource levels on scene to initiate suppression activities and the arrival of the first paramedic.
- ◆ The Turnout Time includes the dispatch message (address and type of call) and the personnel listen to and write down the information, which adds to the Turnout Time.

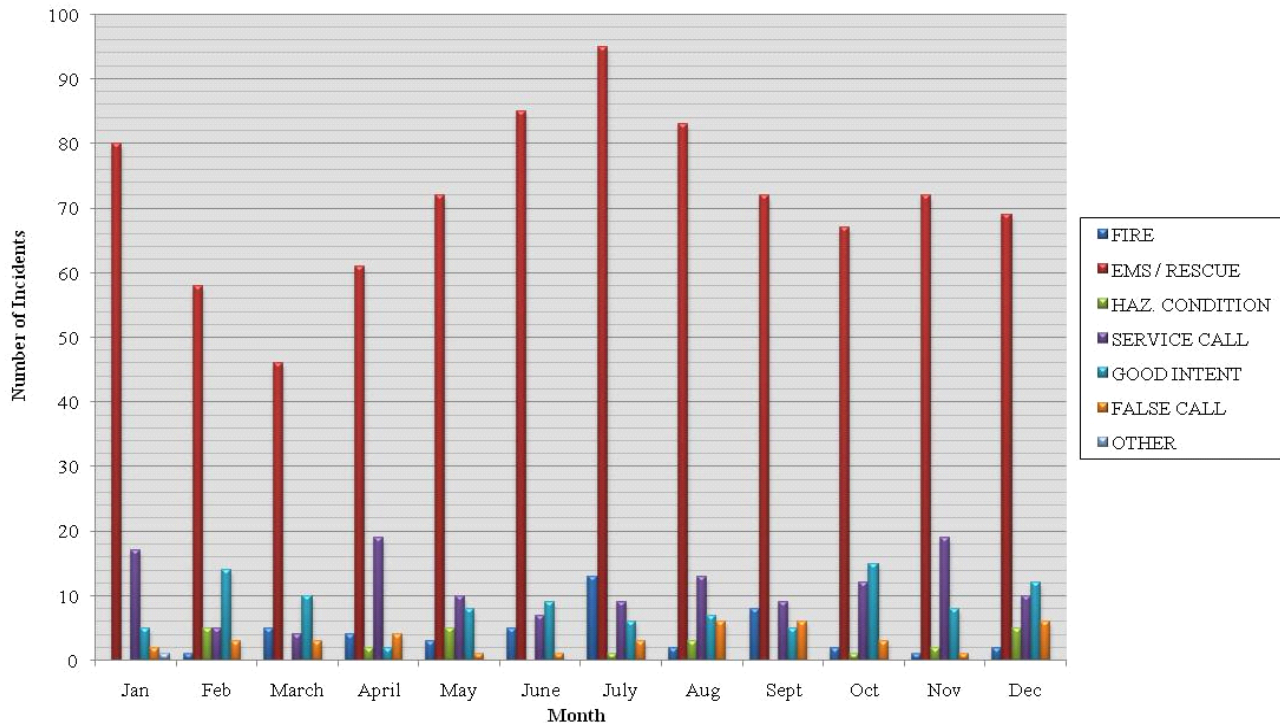
Firefighters clear a fallen tree from the road.



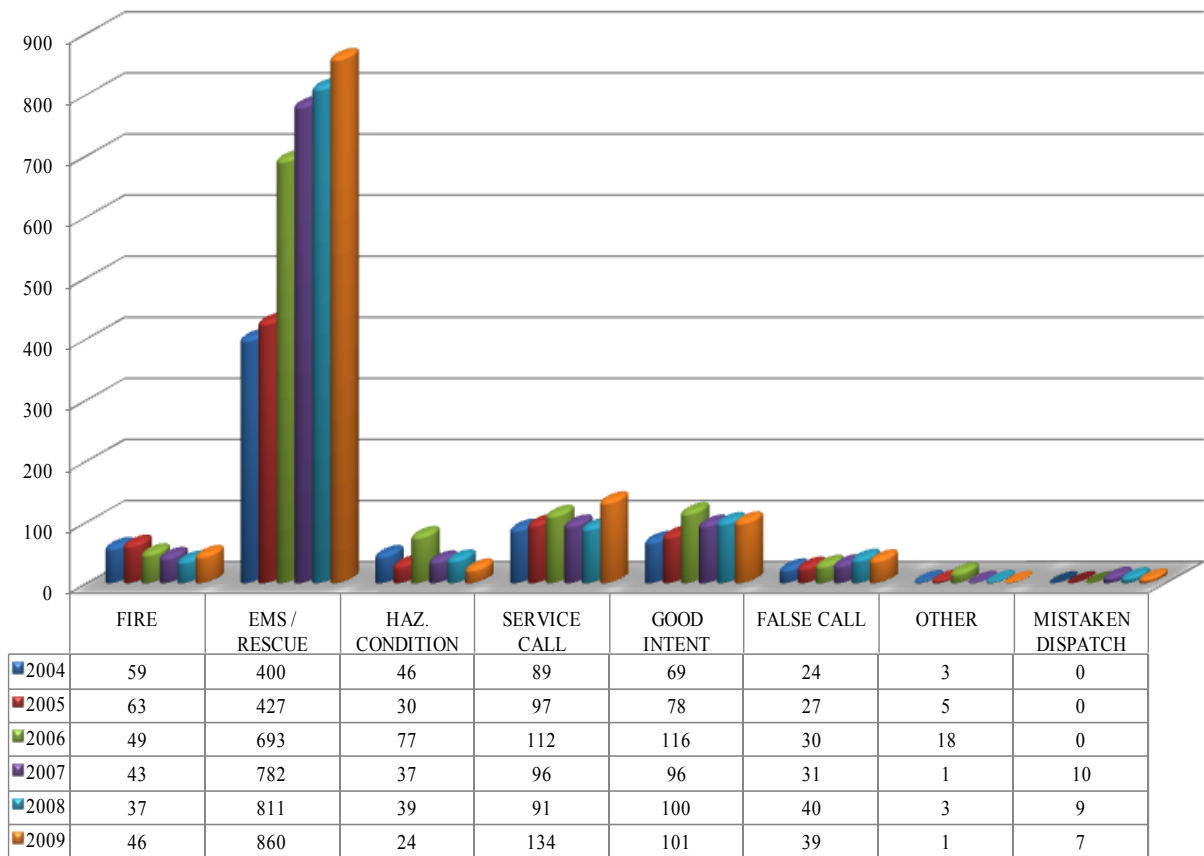
2009 PCFD 8
Incident Summary

Incident Type	Jan	Feb	March	April	May	June	July	Aug	Sept	Oct	Nov	Dec	AVG	YTD
FIRE	0	1	5	4	3	5	13	2	8	2	1	2	4	46
EMS / RESCUE	80	58	46	61	72	85	95	83	72	67	72	69	72	860
HAZ. CONDITION	0	5	0	2	5	0	1	3	0	1	2	5	2	24
SERVICE CALL	17	5	4	19	10	7	9	13	9	12	19	10	11	134
GOOD INTENT	5	14	10	2	8	9	6	7	5	15	8	12	8	101
FALSE CALL	2	3	3	4	1	1	3	6	6	3	1	6	3	39
OTHER	1	0	0	0	0	0	0	0	0	0	0	0	0	1
MISTAKEN DISPATCH	0	0	0	1	0	2	1	0	2	1	0	0	1	7
TOTAL	105	86	68	93	99	109	128	114	102	101	103	104	101	1212
RESPONSE TIME	5:02	5:25	4:52	4:40	5:07	5:03	5:09	5:19	5:22	4:52	4:57	5:32	5:07	
REACTION TIME	0:55	0:55	0:50	0:58	0:51	0:49	0:43	0:50	0:59	0:53	0:51	0:56	0:53	

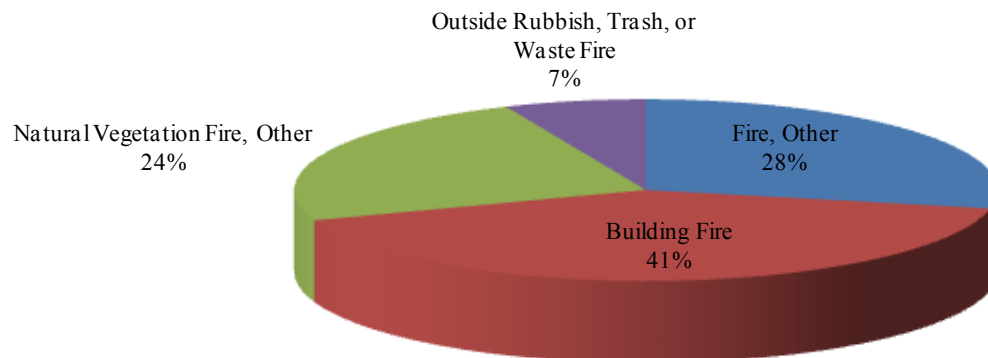
2009 Incident Response Summary



Six Year Comparison of Incidents



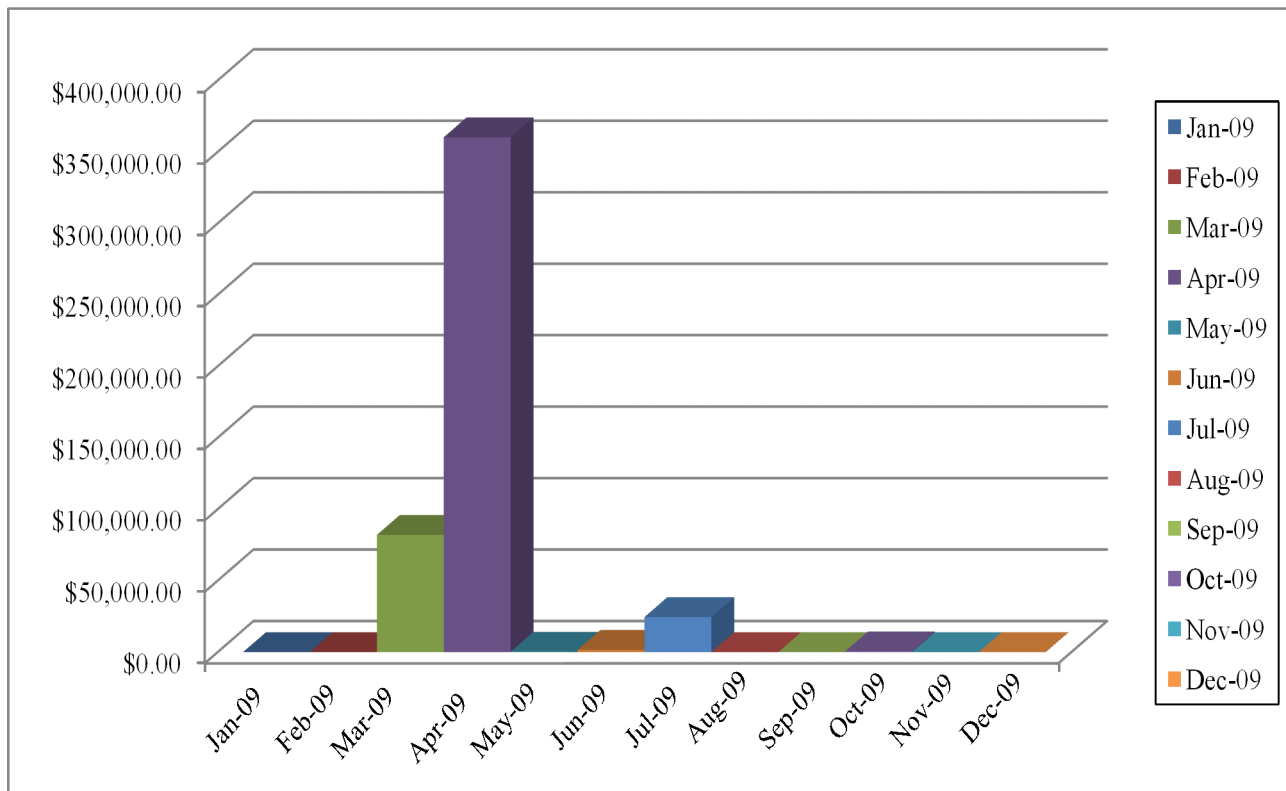
2009 Fires by Type



Total Fire Loss by Month

Date Range: From 1/1/2009 To 12/31/2009

Month	Count of Fires		Total Loss	Total Value
	With Loss			
1/2009	0		\$0.00	\$0.00
2/2009	0		\$0.00	\$0.00
3/2009	2		\$82,000.00	\$250,900.00
4/2009	4		\$360,250.00	\$360,250.00
5/2009	5		\$300.00	\$300.00
6/2009	7		\$1,530.00	\$2,530.00
7/2009	9		\$24,500.00	\$129,500.00
8/2009	9		\$0.00	\$0.00
9/2009	9		\$0.00	\$0.00
10/2009	10		\$500.00	\$500.00
11/2009	10		\$0.00	\$0.00
12/2009	10		\$0.00	\$0.00



EMS / Fire Priority Incident Arrival Times 2009

District: 08-100, 08-210, 08-800

# of Incidents	Amount of Time to Arrival
19	<1
53	>1<2
97	>2<3
78	>3<4
82	>4<5
27	>5<6
8	>6<7
5	>7<8
2	>8<9
0	>9<10
8	>10

Total EMS Incidents

379

District: 08-300, 08-310, 08-400

# of Incidents	Amount of Time to Arrival
0	<1
0	>1<2
2	>2<3
4	>3<4
6	>4<5
18	>5<6
40	>6<7
27	>7<8
13	>8<9
2	>9<10
7	>10

Total EMS Incidents

119

District: 08-100, 08-210, 08-800

# of Incidents	Amount of Time to Arrival
1	<1
1	>1<2
1	>2<3
3	>3<4
4	>4<5
2	>5<6
0	>6<7
1	>7<8
0	>8<9
0	>9<10
1	>10

Total Fire Incidents

14

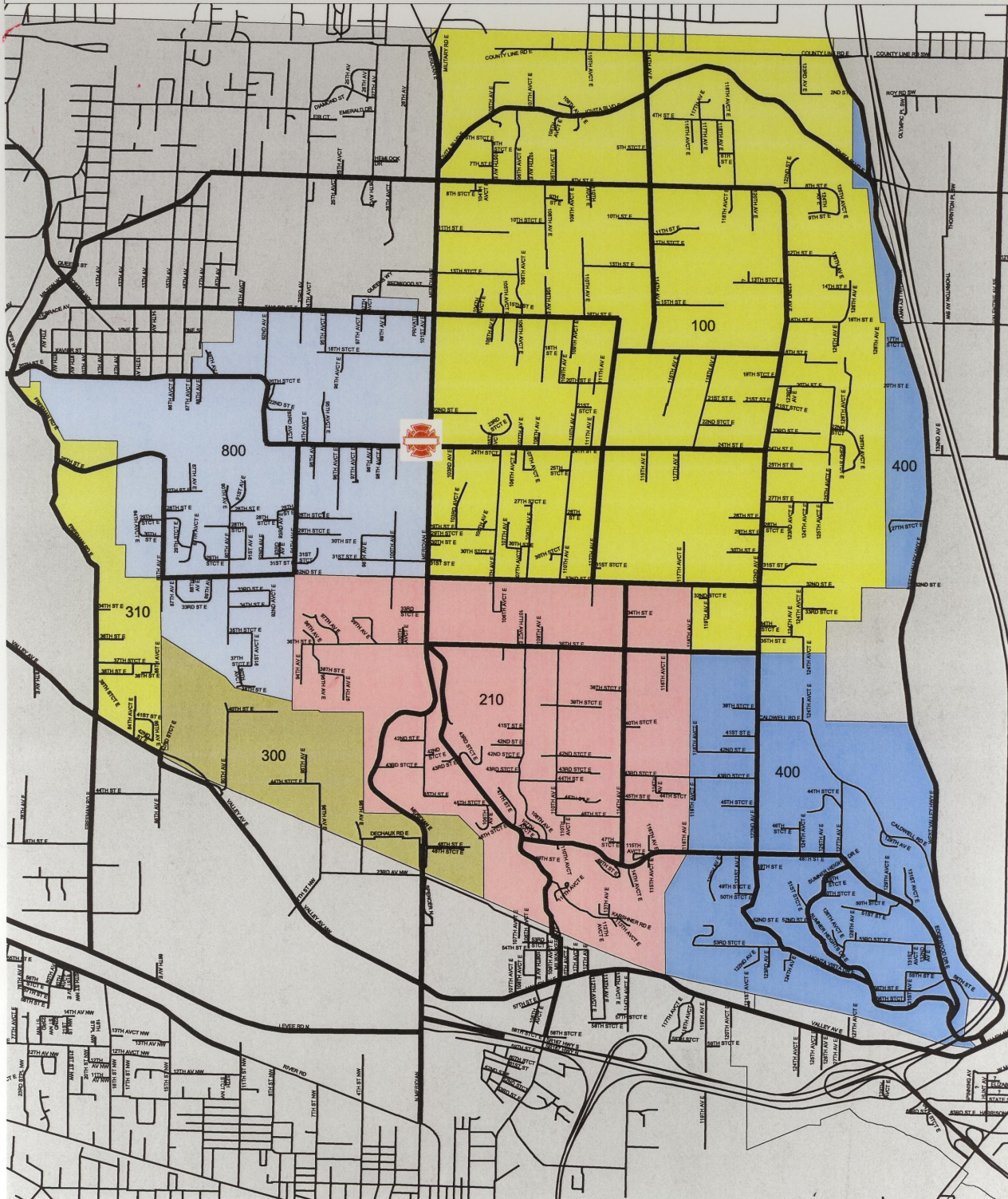
District: 08-300, 08-310, 08-400

# of Incidents	Amount of Time to Arrival
0	<1
0	>1<2
0	>2<3
0	>3<4
0	>4<5
0	>5<6
1	>6<7
0	>7<8
0	>8<9
0	>9<10
0	>10

Total Fire Incidents

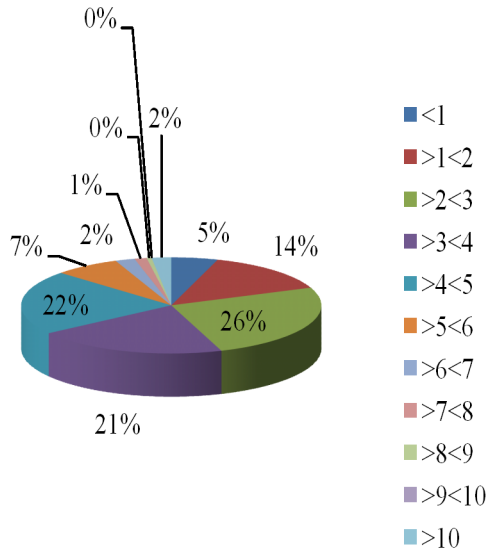
1

Runcard Layout

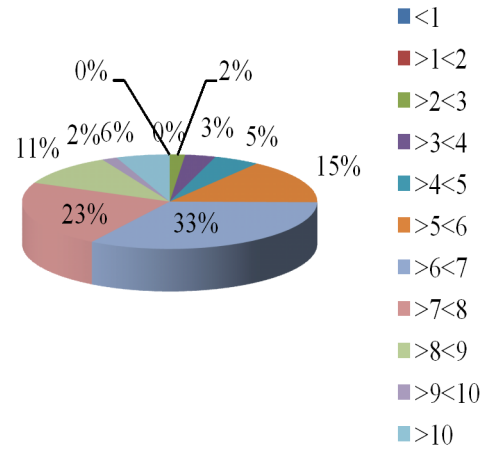


2009 Incident Arrival Times

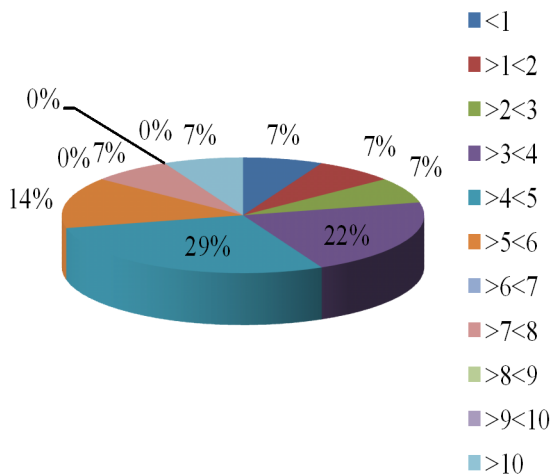
EMS Zones 08-100, 08-210, 08-800



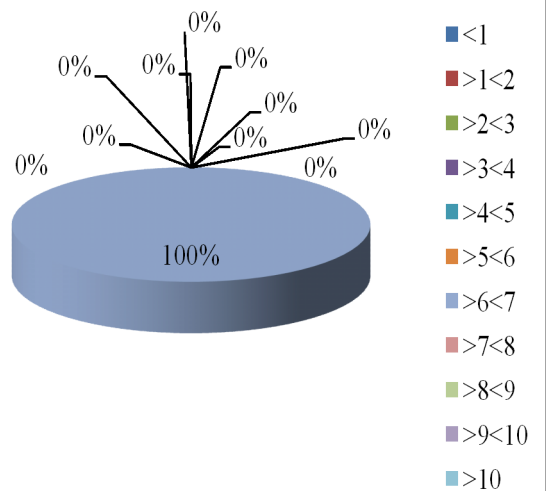
EMS Zones 08-300, 08-310, 08-400



Fire Zones 08-100, 08-210, 08-800



Fire Zones 08-300, 08-310, 08-400



2009 Mutual Aid

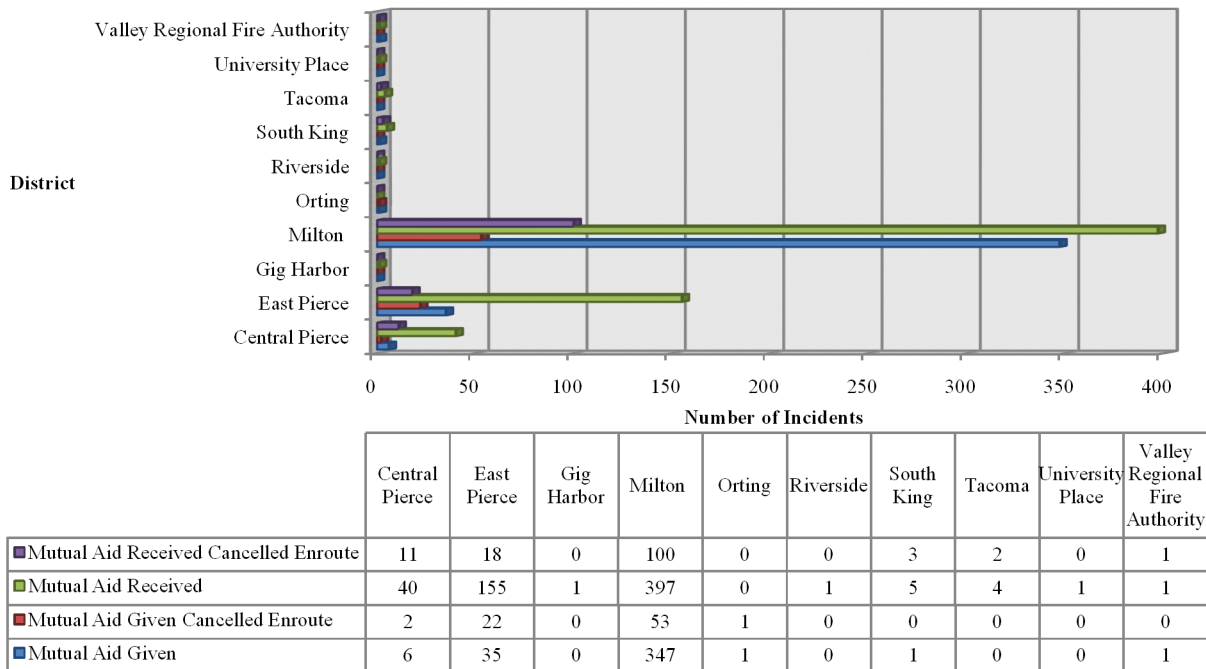
District	Mutual Aid Given	Mutual Aid Given Cancelled Enroute	Mutual Aid Received	Mutual Aid Received Cancelled Enroute
Central Pierce	6	2	40	11
East Pierce	35	22	155	18
Gig Harbor	0	0	1	0
Milton	347	53	397	100
Orting	1	1	0	0
Riverside	0	0	1	0
South King	1	0	5	3
Tacoma	0	0	4	2
University Place	0	0	1	0
Valley Regional Fire Authority	1	0	1	1
Total	391	78	605	135

District	Mutual Aid Given	Mutual Aid Given Cancelled Enroute	Mutual Aid Received	Received Cancelled Enroute
Milton (ALS)*	139	7	183	36
Milton (BLS)**	163	33	166	45
Milton (Other)	45	13	48	19
Total Milton	347	53	397	100

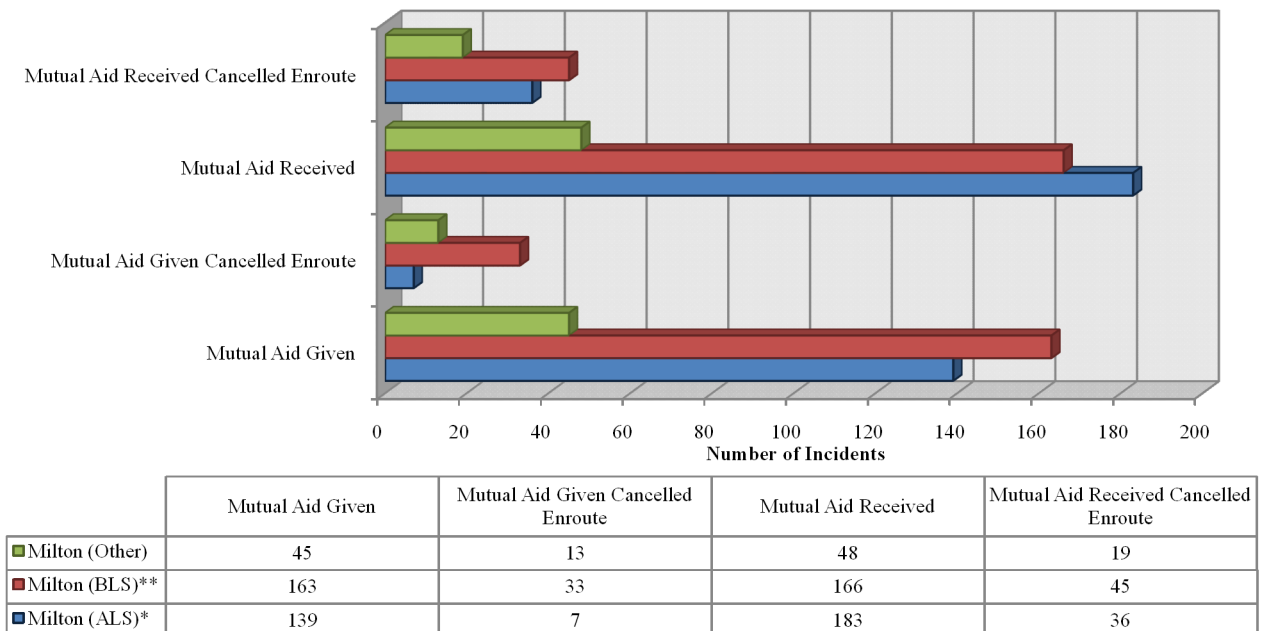
*ALS - Advanced Life Support

**BLS - Basic Life Support

2009 Mutual Aid



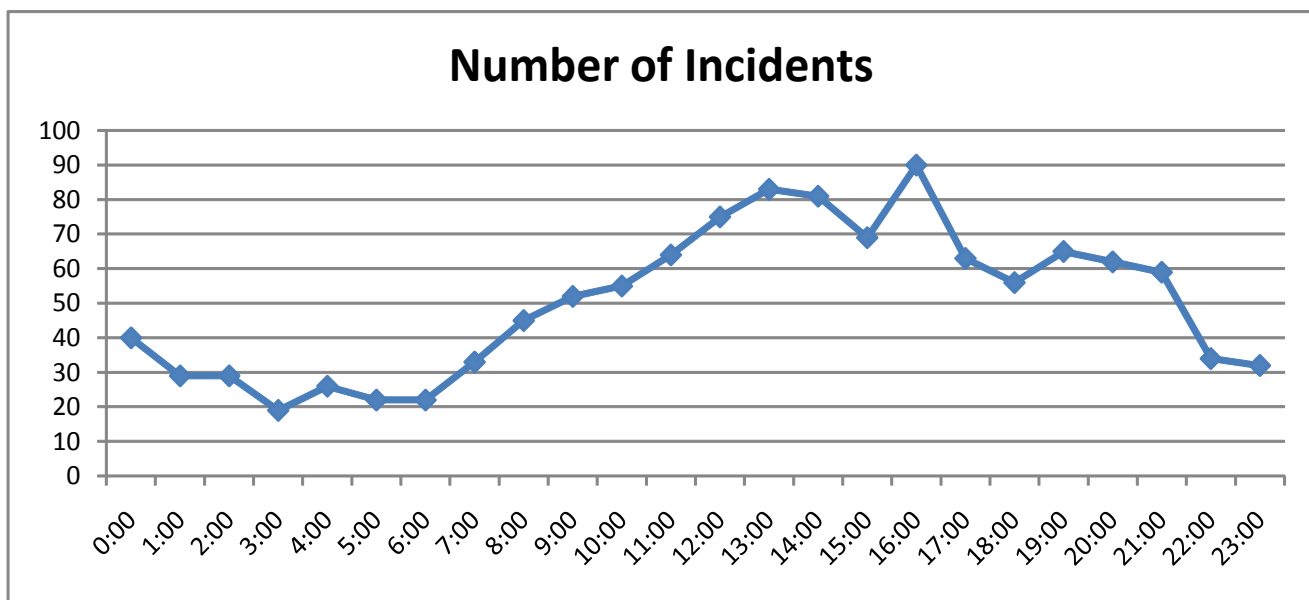
2009 Milton Mutual Aid



Incidents by Time of Day

Date Range: From 1/1/2009 To 12/31/2009

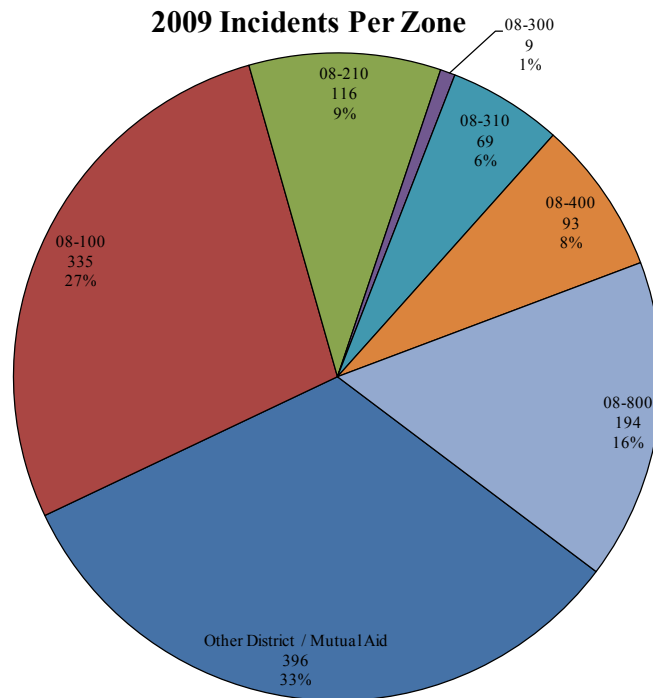
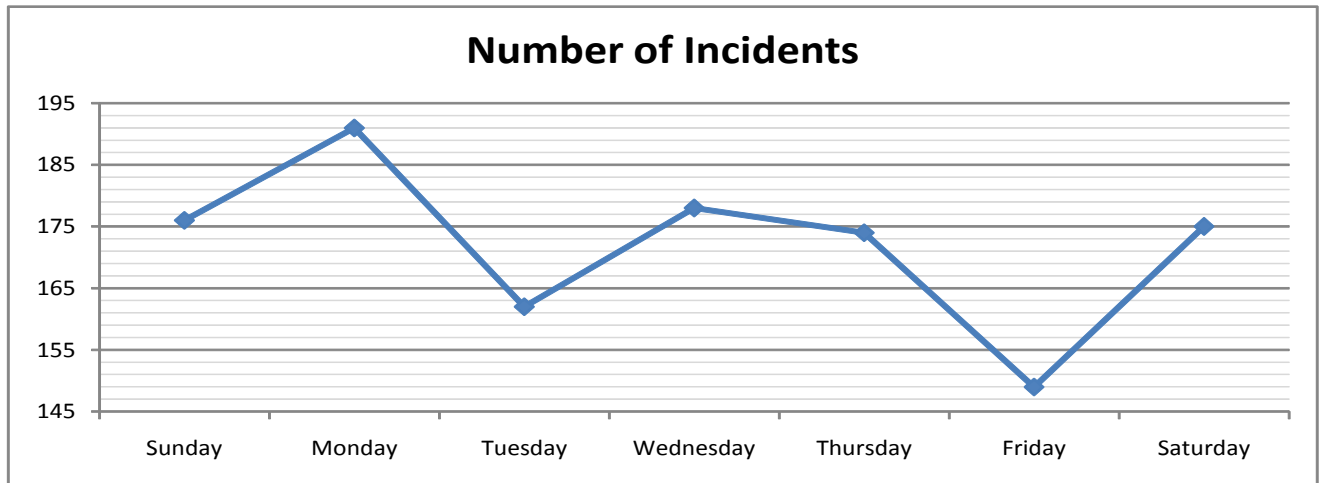
<u>Time of Day</u>	<u>Number of Incidents</u>
00:00:00 to 00:59:59	40
01:00:00 to 01:59:59	29
02:00:00 to 02:59:59	29
03:00:00 to 03:59:59	19
04:00:00 to 04:59:59	26
05:00:00 to 05:59:59	22
06:00:00 to 06:59:59	22
07:00:00 to 07:59:59	33
08:00:00 to 08:59:59	45
09:00:00 to 09:59:59	52
10:00:00 to 10:59:59	55
11:00:00 to 11:59:59	64
12:00:00 to 12:59:59	75
13:00:00 to 13:59:59	83
14:00:00 to 14:59:59	81
15:00:00 to 15:59:59	69
16:00:00 to 16:59:59	90
17:00:00 to 17:59:59	63
18:00:00 to 18:59:59	56
19:00:00 to 19:59:59	65
20:00:00 to 20:59:59	62
21:00:00 to 21:59:59	59
22:00:00 to 22:59:59	34
23:00:00 to 23:59:59	32



Incidents by Day of Week

Date Range: From 1/1/2009 To 12/31/2009

Day of the Week	Number of Incidents
Sunday	176
Monday	191
Tuesday	162
Wednesday	178
Thursday	174
Friday	149
Saturday	175



Incident Distribution By Occupancy

Date Range: From 1/1/2009 To 12/31/2009

All Districts Selected

Occupancy Type	Building Fires	Other Fires	Overpressure Rupture	Medical Rescue	Hazard Cond	Service Calls	Good Intent	False Calls	Sub Total
Boarding/rooming house, residential hotels				1					1
Clinics, Doctors offices, hemodialysis centers				1					1
Clubhouse				1					1
Convenience store				1					1
Day care, in commercial property				1					1
Department or discount store						1			1
Health care, detention, & correction, other				1					1
Hospital - medical or psychiatric							1		1
Library	1								1
Outbuilding, protective shelter						1			1
Outside or special property, other				1					1
Post office or mailing firms				1					1
Professional supplies, services				1					1
Public or government, other				1					1
Motor vehicle or boat sales, services, repair	1	1							2
Personal service, including barber & beauty shops				1			1		2
Restaurant or cafeteria				2					2
Vacant lot		1				1			2
Bank				1		1	1		3
General retail, other				2			1		3
High school/junior high school/middle school						1		2	3
Mercantile, business, other						1		2	3
Open land or field		1		2					3
Playground				3					3
Undetermined	1			1			1		3
Business office		1		2			1		4
Doctor, dentist or oral surgeon's office				4					4
Property Use, other				3			1		4
Service station, gas station				5			1		6
Manufacturing, processing		1		4			1	1	7
Residential board and care		1		7			2		10
Bar or nightclub	1			7			3		11
Food and beverage sales, grocery store		1		9	1	1	1		13
Street or road in commercial area		1		11			1		13
Vehicle parking area				11		2	1		14
Elementary school, including kindergarten				9			2	9	20
Church, mosque, synagogue, temple, chapel				15		2	2	3	22
Fire station				20	1	4	1		26
Residential, other	1	1		27		3			32
Highway or divided highway		2		25	4	3	3	1	38
Street, other				23	1	6	10		40
Residential street, road or residential driveway		3		27	2	6	4		42
Multifamily dwellings	2	3		72		2	4	3	86
24-hour care Nursing homes, 4 or more persons		2		85		3	4	1	95
1 or 2 family dwelling	8	10		430	14	96	42	16	616
Mistaken Dispatch / Unidentified									66
Totals:	15	29	0	818	23	134	89	38	1,212

2009 Patient Transports

	<u>ALS</u>	<u>BLS</u>
January	26	20
February	15	12
March	13	10
April	14	11
May	20	16
June	23	19
July	32	13
August	28	14
September	20	9
October	19	10
November	16	17
December	17	16
Total ALS/BLS Transports	243	167
Total All Transports	410	

*Vehicle
accident at
24th &
Meridian.*



Fire Prevention

Fire Prevention is an essential function in reducing fire losses by decreasing the incidents of uncontrolled fires. Fire department staff conduct two types of inspections: company level fire safety inspections and fire marshal inspections. Inspections help ensure life safety conditions within a structure. During company level inspections the duty crew engine company will check for potential fire hazards and advises the owner of corrections needed. These inspections provide an opportunity to educate the public, create safer structures for both business owners and their patrons and allow for engine company familiarization and pre-incident planning. In 2009, 127 company level inspections were conducted. This represents 99% of the existing commercial

business class occupancies in Edgewood. Examples of items inspected are exit doors, proper operation of exit doors, clear aisles and exiting, emergency lighting, and several other general fire safety items. Fire Marshal inspections typically account for educational facilities, multi-family housing and commercial structures under construction. Examples of these inspections include the installation and/or maintenance of fire detection equipment, fire suppression systems, notification systems, fire pumps, hazardous materials storage, access to the facility, proper fire hydrant location, and fire flows. In 2009, 46 Fire Marshal inspections were conducted.

Plan reviews are also a very important part of the Fire Marshal services. New construction site and building architectural plans are reviewed as needed in conjunction with the Planning, Building and Water Departments. The Fire Marshal scrutinizes the plans for proper access to the facility, location and number of fire hydrants, size of water main, required fire flow, required fire protection systems and any hazards existing to hinder fire suppression activities. In 2009, 22 plan reviews or pre-development meetings were conducted.



Firefighter Parmelee inspecting a fire extinguisher.

Community Education

CPR TRAINING

In 2009, the District hosted six (6) Adult/Child/Infant First Aid CPR Courses and two (2) Babysitter Courses. Courses were delivered by the American Red Cross in the fire station training room.

STATION TOURS

We provided fourteen (14) station tours this year. Participants were preschools, Boy Scouts and other members of the community. Most station tours lasted 45 to 60 minutes depending on event planned by the contact and the crew delivering the tours.



Station Tour

FIRE SAFETY EDUCATION

The theme of this year's campaign, "Stay Fire Smart, Don't Get Burned" focused on preventing the leading causes of home fires – cooking, heating and electrical equipment, and smoking materials.

Our goal was to deliver the fire prevention message to all elementary school classes. Each student received educational materials to take home. These materials not only remind the children of the

lesson, but teach the parents as well. Some of the teachers asked their assigned shift to come back in the classroom and share about careers in the fire service. Some of the preschools chose to visit the fire station; the safety message was delivered along with a station tour lasting 45 to 60 minutes.

Each shift was assigned to be the point of contact for a different elementary school during the 2009 school year. The shifts were each given a prevention outline and information folder (messages tailored to each grade level) along with PR supplies. Supplies distributed were pencil pouch with pencil, stickers, eraser, ruler, stadium cup, newsletters from NFPA, 10 posters and banner with prevention slogan message. The shift Captain was responsible for scheduling his shift's appointments / presentations with the principal or school teachers.

The department encouraged each shift to be involved with their school outside of the classroom presentations. As good role models, when time allowed, the firefighters spent time visiting the schools during lunch, assemblies, recess and fire drills. This also helps the children to be familiar with firefighters and less afraid in an emergency.

Station Tour



OPEN HOUSE AND CITY PICNIC

Open House and the city picnic are another chance for us to present our theme of this year's Fire Prevention message, "Stay Fire Smart, Don't Get burned". Open house was another successful event along with the city picnic; both events took place over two separate weekends. Both events allowed kids of all ages to receive fire safety information, tour their fire station, sit in a fire trucks, visit the fire safety trailer and ask questions of their firefighters.



Open House

EASTER EGG HUNT AND SANTA RUN

Easter Egg Hunt and Santa Run were both successful events this year, thanks to Local 726 and its members and the staff including the FIT members of PCFD#8. Community members who missed Santa and the fire engine were

Easter Egg Hunt



Santa Run

invited to come to the Station and get a candy cane and photo with Santa. Both events have always been a time of high profile for our department. These events are growing in numbers of participants and have continued to be successful due to community support and the dedication and hard work of the members of this department.



Training Sessions

In 2009, District personnel trained 3,525 hours according to the Training Division. This number represents all District personnel including shift personnel, Firefighters-In-Training, managers, and office staff. For Shift firefighters, the average number of hours spent training in 2009 was 202 hours per firefighter. General topics covered in the training included firefighter and fire ground safety, strategies and tactics, incident management, hose evolutions, ventilation, safe operations of vehicles, and hazardous materials response.



Firefighters rescue a mannequin during a training exercise.

Emergency medical services training totaled approximately 925 hours (26% of all

training).

Washington Administrative Code requires face piece fit tests and annual respiratory evaluation be administered to each firefighter annually. The fit tests insure that the face piece fits properly protecting firefighters from dangerous atmospheres. The respiratory evaluation performed by a physician qualifies personnel as medically fit to utilize self-contained breathing apparatus. All response personnel were tested and evaluated in 2009.

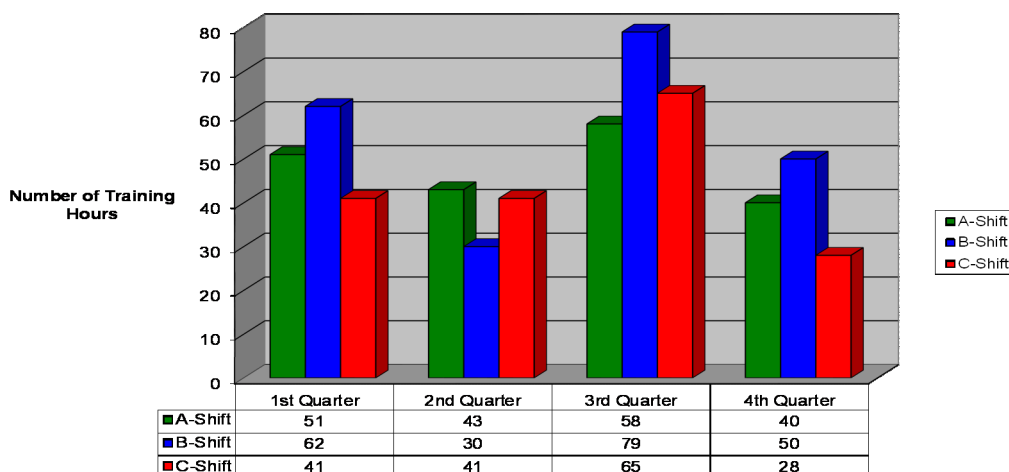
The District Fire Commissioners attended the State Fire Commissioners conference meeting in Chelan County.

During this reporting period, the following funds were expended for training:

Fire Training
Budgeted: \$11,700
Expended: \$5,402

Emergency Medical Services Training
Budgeted: \$2,800
Expended: \$1,669

Average Training Per Person Per Quarter



Personnel

COMMISSIONERS

Dale Mitchell, ChairmanTerm: 1/1/10 – 12/31/15
 Ed Egan, Vice-ChairmanTerm: 1/1/06 – 12/31/11
 Kevin GarlingTerm: 1/1/08 – 12/31/13

CAREER (FULL-TIME)

YEARS OF SERVICE

Fire Chief Ed Goodlet 22 Years
 Assistant Chief Chuck King 3 Years
 Captain Jeb Baker 14 Years
 Captain Steve Bisig 26 Years
 Captain Lance Schinkal 22 Years
 Firefighter Jeff Collins 7 Years
 Firefighter Chris Duoos 10 Years
 Firefighter Adam Lathrop 5 Years
 Firefighter Dave Lindenmuth 1 Year
 Firefighter Matthew Lowery 14 Years
 Firefighter Jacob Poisson 1 Year
 Firefighter Heidi Rolfsness 11 Years
 Firefighter Bill Sandlian 8 Years
 Firefighter Jim Thor 1 Year

 Michelle Hollon, Office Manager 18 Years
 Corina Charest, Office Assistant 6 Years

CHAPLAIN

Daryl Eidinger 18 Years

FIREFIGHTER IN TRAINING (FIT, VOLUNTEERS)

Current (start date in 2009)

Ryan Callaham 1 Year
 Andrew Krasner 1 Year
 Kevin Lavelle 1 Year
 Taylor McDonald 1 Year
 James Parmelee 4 Years
 Erik Peterson 1 Year
 Robert Sonneman 4 Years
 Ryan Thorne 2 Year

Past (separated in 2009)

Justin Gagnon (12/21/2009)

Mahalia Quiocho (05/07/2009)

Kevin Taylor (09/18/2009)

Staff Injuries and Illness

In 2009, there were seven reported work-related injuries, but none that resulted in loss of work time.

One injury occurred while a firefighter was loading a wood transportation container with self-contained breathing apparatus bottle. The lid closed while he was placing a bottle in the box and glanced his nose and face. The firefighter suffered abrasions.

Another injury occurred to a firefighter who was pulling ceiling gypsum board checking for fire extension in a house. A larger than expected piece of the ceiling fell striking the firefighter on the head.

Since he was wearing his personal protective clothing, he only suffered a stiff neck for a day.

While carrying public education materials, a firefighter lost awareness of his surroundings and struck the door of the fire engine with his knee. This resulted in slight pain for a short time.

Four firefighters were injured when the District pick-up truck they were riding in was struck by a car behind them. The speeds were low and damage to the vehicles was minor, but the firefighters all reported pain in either their necks or backs.

Apparatus

There were no major changes in apparatus in 2009.



Engine 81

FUTURE MAJOR ACQUISITIONS

The District's apparatus committee recommended implementing a replacement guideline based on a point value system for Fire Department Apparatus. No new apparatus are scheduled to be replaced in 2010.

EQUIPMENT—VEHICLE SUPPLIES—MAINTENANCE, TESTING

Budgeted: \$33,050.00

Expenditures: \$7,874.70

No new items were purchased in 2009.

2009 Vehicle Maintenance:

Budgeted: \$28,800.00

Expended: \$25,076.76

E81 (Pierce)	7,745.40
E812 (Freightliner)	5,921.29
A81 (Aid Car) EMS	2,688.27
U841 (Ford Excursion)	202.70
U842 (Ford Pickup)	318.73
U843 (Ford Expedition)	3,620.68
SCBA Maintenance	3,097.77
Miscellaneous	1,481.92
Total:	\$25,076.76



Antique Engine 82

Facilities



Edgewood Fire Department in 1949

The District's fire station was built in 1947 and has undergone numerous layout, remodel, and expansion projects since its original construction. The current structure is deteriorating, limited in capacity, and lacks in functionality. A capital facility plan was evaluated and determined that given the merger with East Pierce Fire and Rescue and associated change in deployment strategy, a remodel to the existing facility is necessary to facilitate ad-

ditional firefighters. Concurrently in September of 2009 a grant was submitted through FEMA for the above scope of work. Awards for this grant will be distributed through September 2010.

During this reporting period, the following funds were expended on the facility:

Taxes – Building and Grounds

Budgeted: \$1,000

Expended: \$593.96

Utilities

Budgeted: \$13,000

Expended: \$12,525.92

Repair, Maintenance, Furnishings, Grounds

Budgeted: \$30,070



Edgewood Fire Department in 2009

ANNUAL REPORT

PIERCE COUNTY FIRE DISTRICT NO. 8

MCAG NO. 1260

Submitted pursuant to RCW 43.09.230
to the
STATE AUDITOR'S OFFICE

FOR THE FISCAL YEAR ENDED **DECEMBER 31, 2009**

Certified correct this 19 day March, 2010 to the best of my knowledge and belief:

NAME:	MICHELLE HOLLON
TITLE:	OFFICE MANAGER/FINANCIAL OFFICER
PREPARED BY:	MICHELLE HOLLON
TELEPHONE NUMBER:	253-927-2313
FAX NUMBER:	253-927-2340
E-MAIL ADDRESS:	Mhollon@eastpiercefire.org
HOME PAGE ADDRESS:	10105 24 TH St E Edgewood, WA 98371

FINANCIAL STATEMENTS

Pierce County Fire District No. 8 January 1, 2009 through December 31, 2009

FINANCIAL STATEMENTS

Resources and Uses Arising from Cash Transactions – 2009
Notes to Financial Statements – 2009

ADDITIONAL INFORMATION

Details of Revenues and Other Sources – 2009
Details of Expenditures and Other Uses – 2009
Schedule of Expenditures of Federal Awards – 2009
Schedule of Labor Relations Consultant - 2009

PIERCE COUNTY FIRE DISTRICT NO. 8
January 1, 2009 through December 31, 2009

Directory of Officials

Elected

Board of Commissioners:

Term

Expiration

Chair

Dale Mitchell

6

2009

Ed Egan

6

2011

Kevin Garling

6

2013

Appointed

Fire Chief

Ed Goodlet

District Secretary

Michelle Hollon

District Address

10105 24th St E
Edgewood, WA 98371
253-927-2313

MCAG NO. 1260

PIERCE COUNTY FIRE DISTRICT 8

Schedule 05

CURRENT EXPENSE - 001

DETAIL OF EXPENDITURES AND OTHER USES
For The Year Ended December 31, 2009

Account No.	Description	Object Code	Object Description	Actual Amount
511.70	Election Costs	40	Services	\$3,101.00
522.10	Fire Control - Admin.	10	Salaries	\$416,368.00
		20	Benefits	\$103,383.00
		30	Supplies	\$23,120.00
		40	Services	\$30,265.00
522.20	Fire Control - Fire Suppression	20	Benefits	\$21,791.00
		30	Supplies	\$18,169.00
		40	Services	\$22,388.00
522.30	Fire Control - Fire Prevention	30	Supplies	\$5,316.00
522.40	Fire Control - Training	30	Supplies	\$5,402.00
		40	Services	\$9,507.00
522.50	Facilities	40	Services	\$33,718.00
522.60	Intergovernmental	50	Services	\$0.00
522	Total Fire Control			\$689,427.00
526.10	Ambulance, Rescue & Emer. Services (Admin) Aid	10	Salaries	\$845,133.00
		20	Benefits	\$208,830.00
		40	Services	\$29,522.00
526.40	Ambulance, Rescue-Training	30	Supplies	\$1,669.00
		40	Services	\$16,609.00
526.50	Facilities	30	Supplies	\$7,982.00
		40	Services	\$2,985.00
526.80	Fuel	30	Supplies	\$78.00
526	Total Ambulance, Rescue			\$1,112,808.00
528.50	Communications	30	Supplies	\$1,432.00
528.40		40	Services	\$1,273.00
528.60	Intergovernmental	50	Services	\$51,822.00
528.80	Other Services	40	Services	\$9,545.00
528	Total Communications		Supplies	\$64,072.00
594.22	Capital Outlay (Fire Control)	60	Capital Outlay	\$9,906.00
594.26	Capital Outlay (Ambulance, Rescue	60	Capital Outlay	\$17,013.00

MCAG NO. 1260PIERCE COUNTY FIRE DISTRICT 8

Schedule 16

SCHEDULE OF EXPENDITURES OF FEDERAL AWARDS
For the Year Ended December 31, 2009

1	2	3	4	5			6
Federal Agency Name / Pass-Through Agency Name	Federal Program Name	CFDA Number	Other I.D. Number	Expenditures			Foot-Note Ref.
				From Pass-Through Awards	From Direct Awards	Total	
Department of Homeland Security	Staffing for adequate fire and emergency response grant	97.044	EMW-2007-FF-00464		210,155.40	210,155.40	
Total Federal Awards Expended					210,155.40	210,155.40	

The accompanying notes to the Schedule of Expenditures of Federal Awards are an integral part of this Schedule.

EFF DATE
01/01/05

SUPERSEDES
01/15/04

FIRE DISTRICTS

PT CH PAGE
4 3 27

MCAG NO. 1260PIERCE COUNTY FIRE DISTRICT 8

Schedule 19

SCHEDULE OF LABOR RELATIONS CONSULTANT(S)
For the Year Ended December 31, 2009

Has your government engaged labor relations consultants? _____ Yes <u>X</u> No
If yes, please provide the following information for each consultant:
Name of firm
Name of Consultant
Business address
Amount paid to consultant during fiscal year
Terms and conditions, as applicable, including:
Rates (e.g., hourly, etc.) _____
Maximum compensation allowed _____
Duration of services _____
Services provided _____

Certified correct this 19th day of March, <u>2010</u> to the best of my knowledge and belief:
Signature
Name Michelle Hollon
Title Office Manager/Financial Officer

PIERCE COUNTY FIRE PROTECTION DISTRICT NO. 8
Notes to Financial Statements
January 1, 2009 through December 31, 2009

Note 1 – SUMMARY OF SIGNIFICANT ACCOUNTING POLICIES

Pierce County Fire Protection District No. 8 is a special purpose government that provides fire protection and emergency medical services to the general public and is supported primarily through property taxes. The District was incorporated on August 16, 1947 and operates under Chapter 52 RCW and other laws of the state of Washington applicable to fire districts.

A. Fund Accounting

The account of the District are organized on the bases of funds, each of which is considered a separate accounting entity. Each fund is accounted for with a separate set of single-entry accounts that comprise its cash, investments, revenues and expenditures or expenses, as appropriate. The District's resources are allocated to and accounted for an individual funds depending on what they are to be spent for and how they are controlled. The following are the fund types used by the District:

GOVERNMENTAL FUND TYPES:

General (Current Expense) Fund

This fund is the primary operating fund of the District. It accounts for all financial resources and transactions except those required or elected to be accounted for in another fund.

Special Revenue Funds (Reserve Fund)

These funds account for revenues derived from specific taxes, grants, or other sources which are designated to finance particular activities of the District. (These funds include enterprise operations which under generally accepted accounting principles would be accounted for as proprietary funds.)

B. Basis of Accounting

The accounting records for the District are maintained in accordance with methods prescribed by the State Auditor under the authority of Washington State law, Chapter 43.09 RCW. The District uses the *Budgeting, Accounting and Reporting Systems for Fire Districts in the State of Washington*. Basis of accounting refers to when revenues and expenditure are recognized in the accounts and reported in the financial statements. Revenues are recognized only when received in cash, and expenditures are recognized when paid.

Purchases of capital assets are expensed during the year of acquisition. There is no capitalization of capital assets, nor allocation of depreciation expense. Inventory is expensed when purchased.

C. Cash

It is the District's policy to invest all temporary cash surpluses. The amount is included on the statement of resources and uses arising from cash transactions as net cash and investments.

The District's financial statements do not include \$4500.00 in cash. This amount is held in a separate bank to fund petty cash.

The District's financial statements do not include \$3000.00 in cash. This amount is held in a separate bank to fund advance travel.

The District's financial statements do not include \$300.00 in cash. This amount is held in a secure file cabinet and secure office located on the district's premises to fund miscellaneous purchases.

The District's financial statements do not include \$1823.29 in cash. This amount is held in a separate bank fund as a revolving revenue fund for miscellaneous revenue received by the district such as donations, fire marshal and permit fees, reimbursements, etc. and also for direct deposits to the fire district from outside agencies. Like Homeland Security Grants. Monies from this account are transferred to Pierce County Budget and Finance on a quarterly basis.

D. Deposits

The District's deposits (and certificates of deposit) are covered by the Federal Deposit Insurance Corporation and/or the Washington Public Deposit Protection Commission.

E. Capital Assets

Capital assets are long-lived assets of the District and are recorded as capital expenditures when purchased.

F. Compensated Absences

Vacation pay may be accumulated for salaried personnel to a maximum of 20 working days annually for the Fire Chief and Assistant Chief.

Hourly administrative personnel may accumulate vacation to a maximum of 10 working days (1-2 years); 15 working days (3-5 years); 20 working days (6-10 years); 25 working days (11-15 years); 30 working days (16-20 years).

Union personnel on 24 hour shifts may accumulate vacation to a maximum of 96 hours (1-4 years); 144 hours (5-10 years); 192 hours (11-15 years); 240 hours (16-20 years); 288 hours (21-25 years).

Sick leave may be accumulated to a maximum of 1,440 for Administrative and salaried personnel. Union personnel may accumulate 2160 hours.

Executive leave is granted to salaried administrative personnel on an annual basis. The Fire Chief receives 8 days annually and the Assistant Chief receives 4 days annually. Executive leave must be used within the year.

Sick leave will be paid at 50% of accrued sick leave balance upon resignation/termination for Chief Officers and Administrative personnel.

Holiday leave is good for the day of the holiday, if the holiday falls on the employee's day off the holiday is observed either the day prior or day after the day of the holiday.
Union personnel are given 5 holidays a year and may take them any day throughout the year.

NOTE 2 – COMPLIANCE AND ACCOUNTABILITY

There have been no material violations of finance related legal or contractual provisions.

NOTE 3 – PROPERTY TAXES

The county acts as an agent to collect property taxes levied in the county for all taxing authorities. Collections are distributed at the end of each month.

Property tax revenues are recognized when cash is received by Pierce County Fire Protection District #8. Delinquent taxes are considered fully collectible because a lien affixes to the property after taxes are levied.

The District's regular levy for the year 2008 for collection in 2009 was \$.95 per \$1,000 on an assessed valuation of \$1,389,913,450 for a total regular levy of \$1,298,253.

The District's Emergency Medical Services (EMS) levy for the year 2008 for collection in 2009 was \$.49 per \$1,000 on an assessed valuation of \$1,389,913,450 for a total EMS levy of \$672,819.

NOTE 4 – INVESTMENTS

The District's investments are held by the Pierce County Treasurer as its agent in the District's name. Investments by fund 690-008; 686-008 and type on December 31, 2009 were as follows:

Fund	Type of Investment	Amount as of 12/31/2009
690.008	Certificate of Deposit	1,103,000
690.008	Certificate of Deposit	425,000
Fund 690.008	Total	1,528,000
686.008	Certificate of Deposit	158,000
686.008	Certificate of Deposit	175,000
686.008	Certificate of Deposit	175,000
686.008	Certificate of Deposit	330,000
686.008	Certificate of Deposit	245,000
686.008	Certificate of Deposit	275,000
Fund 686.008	Total	1,358,000

NOTE 6 – PENSION PLANS

A. LEOFF and PERS

All district full-time employees participate in the Law Enforcement Officers & Fire Fighters Retirement System (LEOFF) and Public Employees Retirement System (PERS) administered by the Department of Retirement Systems, under cost-sharing multiple-employer defined benefit public employee retirement systems. Actuarial information is on a system-wide basis and is not considered pertinent to the district's financial statements. Contributions to the systems by both employee and employer are based upon gross wages covered by the plan.

Historical trend or other information regarding each plan is presented in the State Department of Retirement Systems 2009 financial report. A copy of this report may be obtained at:

Department of Retirement Systems
Communications Unit
P. O. Box 48380
Olympia, WA 98504-8380

B. Other Retirement – Volunteer Firefighters Relief & Pension Fund

The District's contribution for coverage of volunteer fire fighters, who elect this coverage, under this plan for the year ending December 31, 2009 was \$30.00 and represents full liability under the system, except that future rates may be adjusted to meet the system needs.

OTHER DISCLOSURES

The district applied for and received a SAFER Grant, allowing the district to hire 3 additional career firefighters. The grant assists in the wages and benefits of these employees on a 5 year basis. The total award grant funds to be utilized over the 5 year span is \$316,275. This is a reimbursement grant in which the district was reimbursed \$110,685 for 2009.



“Exceptional service provided by quality people, dedicated to the diverse needs of our communities.”

Pierce County Fire District 8

10105 24th Street East
Edgewood, WA 98371

Phone: 253-927-2313
Fax: 253-927-2385
E-mail: ccharest@eastpiercefir.org